

Paper Reference 4IT1/02  
Pearson Edexcel International GCSE

INFORMATION AND COMMUNICATION  
TECHNOLOGY (ICT)  
PAPER 2: PRACTICAL PAPER

# Data Book

In the boxes below, write your name, centre number and candidate number.

Surname					
Other names					
Centre Number					
Candidate Number					

## INSTRUCTIONS

There may be spare copies of some diagrams in case you need them.

**THIS DATA BOOK MUST BE RETURNED WITH THE  
QUESTION PAPER AT THE END OF THE EXAMINATION.**

## Contents

### Page

4	Task A2 – Table 1: Structure of the HOTEL table.
5	Task A2 – Table 2: Structure of the GUEST table.
6	Task A2 – Table 3: Structure of the BOOKING table.
7	Task A2e Image: Relationship for the <b>HOLIDAY</b> database.
8	Task A3a (i) Design
9	Task B3c (i) Worksheet
10	Task B3c (ii) Image

Task A2

Table 1: Structure of the HOTEL table.

FIELD NAME	DATA TYPE	DESCRIPTION/EXAMPLE
Hotel ID	Text	Code to identify the hotel
Hotel Name	Text	
Resort	Text	
Ski Pass	Yes/No	If a ski pass is included in the price
Price Range	Text	High, Medium or Low

Task A2

Table 2: Structure of the GUEST table.

FIELD NAME	DATA TYPE	DESCRIPTION/EXAMPLE
Guest ID	Text	Code to identify the guest
First Name	Text	
Surname	Text	
Email	Text	
Date of Birth	Date/Time	

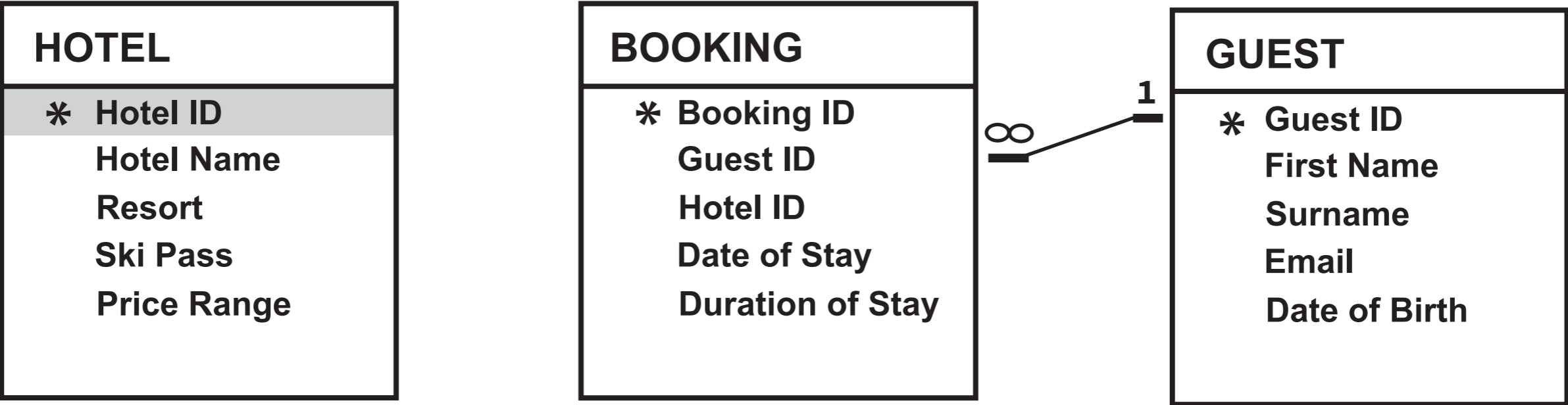
Task A2

Table 3: Structure of the BOOKING table.

FIELD NAME	DATA TYPE	DESCRIPTION/EXAMPLE
Booking ID	Text	Code to identify the booking
Guest ID	Text	
Hotel ID	Text	
Arrival Date	Date/Time	Arrival date of holiday
Duration of Stay	Number	The number of nights the guest is staying

Task A2e

Image: Relationship for the HOLIDAY database.



Edit Relationships?×

Table/Query:

Related Table/Query:

HOTEL

BOOKING

Hotel ID

Hotel ID

☒ Enforce Referential Integrity

☐ Cascade Update Related Fields

☐ Cascade Delete Related Records

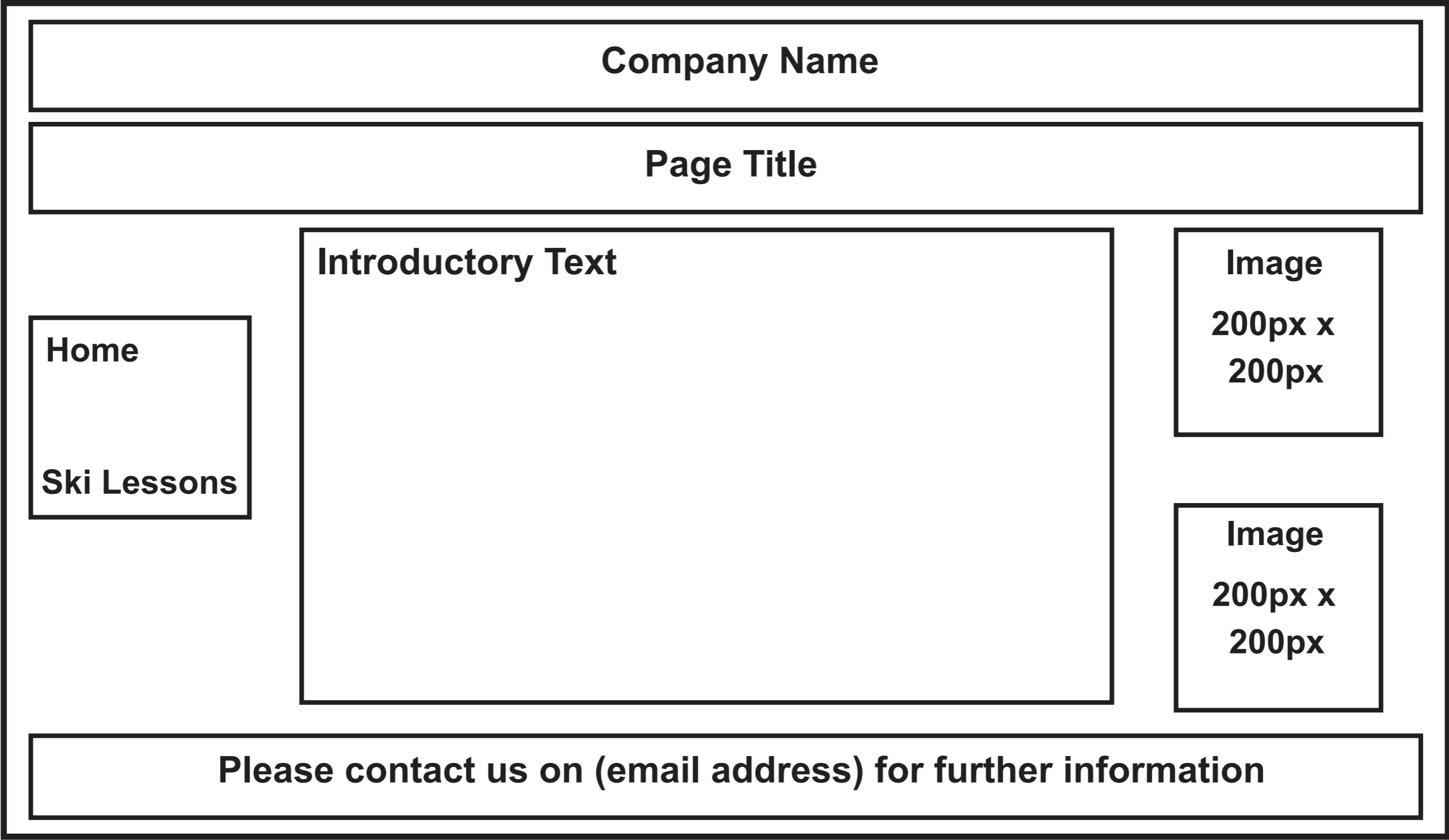
Create

Cancel

Join Type ..

Create New ..

Task A3a (i)  
Design.



## Task B3c (i)

## Worksheet.

	A	B
1	HOTEL STAR RATINGS	
2	HOTEL NAME	STAR RATING
3	Das Konservatorium	5
4	Haus Montain	3
5	Alpen Haus	3
6	Keltisch Resort	5
7	Hotel Flussfer	4
8	Haus Wald	4
9	Hotel Ski	5
10	Hotel mit grünem Blick	5
11	Skigebiet	4
12	Die Hütte	3
13	Haus Sloeden	5
14	Gurgl ski resort	3
15		=COUNTIF(B3:B14,B7)

Task B3c (ii)

Image.

A →

Ski_run_information ▼		⋮	✕	✓
	A	B		
1	SKI RUNS			
2	TOTAL LENGTH IN KM	108		
3				
4	SKI RUN TYPE	LENGTH IN KM		
5	Blue	54		
6	Red	36		
7	Black	18		